



**KEY FEATURES:**

- 7" Marine Grade, Hi-Res Touch Screen
- Class I Div II 316SS NEMA 4X Electrical Enclosure
- Continuous-duty Direct Drive motor
- Heavy-duty NMEA 4X Automated Control Valves
- Pre-filter with 240 sq. ft. of Total Area, and Pressure Differential Monitoring and Alarming
- Powder Coated Aluminum Frame with Pipe Supports
- Upgradeable Output Capacity

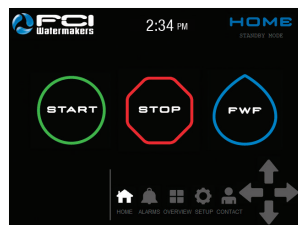
**THE WATERMAKING KING OF THE SEVEN SEAS.**

The Poseidon+ marine reverse osmosis system is the industry's choice when commercial applications call for substantial capacities of fresh water. This high-output unit features unrivaled quality, and superior manufacturing with proven reliability in the most demanding of applications. The frame is powder coated Aluminum with built-in forklift slots, and lifting eyes are optional. Our V4 HMI control system is fully automated and customizable through a marine grade, high resolution Touch Screen mounted in a stainless steel enclosure, which is NMEA 4X compliant. With output ranging from 14,265 – 27,210 GPD, capacity can be easily re-configured with additional vessels. The Poseidon+ is commonly used around the world on offshore oil platforms, petroleum support vessels, commercial ships, military vessels, mid-sized hotels, island applications and for various remote necessities.

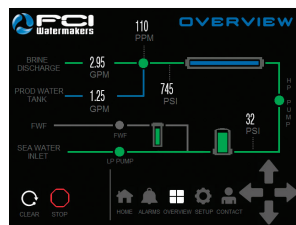
For over three decades, FCI Watermakers has been pioneering technologies and manufacturing the most reliable, trouble-free watermaking systems for the offshore and boating industries. Each unit is manufactured and live-tested in our facility. Your system comes with peace of mind, and a readily available customer service and technical support team. Our worldwide service network ensures proper maintenance, and unrivaled satisfaction.



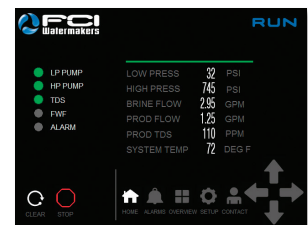
*7" MARINE GRADE, HI-RES TOUCH SCREEN – Will not interfere with other on-board electronics.*



*HMI TOUCH CONTROLS – Simple one-touch operation, and intuitive interface.*



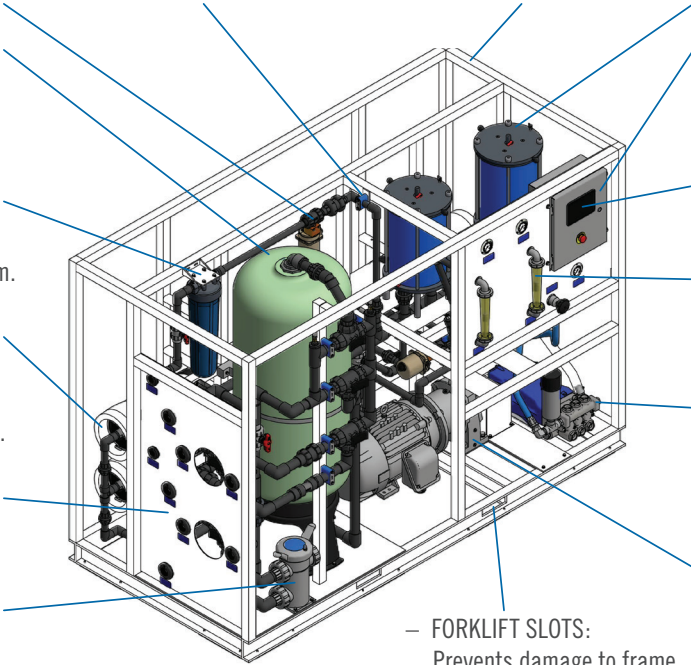
*QUICK VIEW – Monitor system operation and operational stats, or connect via MODBUS.*



*PRODUCTION MONITORING – View operational stats: pressure, flow, temperature, and TDS.*

**POSEIDON+ SYSTEM FEATURES:**

- AUTOMATED VALVES: NEMA 4X, Heavy-duty valves, with manual override.
- PIPE SUPPORTS: Added reinforcements to protect plumbing.
- FRAME: Powder Coated Aluminum, open frame for easy maintenance.
- PRE-FILTER: Total of 240 sq. ft. area with pressure differential monitoring and alarming.
- MEDIA TANK: Used to filter incoming water down to 20 micron and remove up to 4 ppm of iron.
- ELECTRICAL ENCLOSURE: 316 Stainless Steel, NEMA 4X, Class I Div II Standard.
- FRESH WATER FLUSH: Schedule automated flushes through the V4 control system.
- HI-RES TOUCH SCREEN: Marine grade, simple interface.
- UPGRADEABLE CAPACITY: Add vessels on-the-fly to easily re-configure your system from 54m3 to 103m3.
- PRESSURE GAUGES & FLOW METERS: Visual indicators aid troubleshooting.
- UNIT CONNECTIONS: All are outboard-mounted for simple installation.
- 316SS HP PUMP: Continuous-duty, slow turning pump, reduces wear on internal components.
- STRAINER: Removes large particles with easy cleaning.
- DIRECT DRIVE MOTOR GEARBOX: Continuous-duty with no belts to adjust, align or replace.
- FORKLIFT SLOTS: Prevents damage to frame.



**DESIGN PARAMETERS**

Design Permeate Salinity: < 500ppm  
 Salt Rejection (Chloride): 99.7%  
 Control Voltage: 24 vdc  
 Operation Pressure: 825 PSI / 56 Kg/cm<sup>2</sup>

**POWER SUPPLY OPTIONS**

Power: 18.64kW  
 VAC: 220/380/460  
 Phase: 3  
 Hz: 50/60

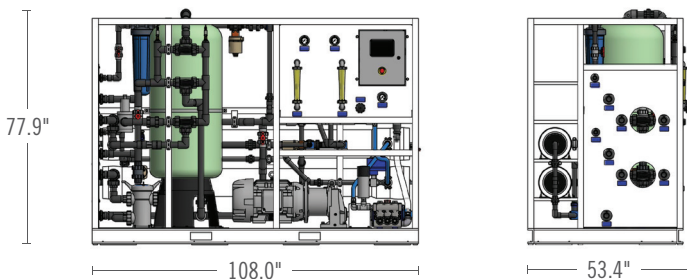
**UTILITIES**

Inlet: 1" FNPT  
 Brine: 1" FNPT  
 Product: 1/2" FNPT  
 FWF: 1/2" FNPT

MODEL	GPD/LPD	M3	GPH/LPH	RECOVERY RATE %	WEIGHT LBS/KG
P54463+	14,265 / 53,999	54	417 / 1,578	24	1,870 / 848
P65463+	17,171 / 64,999	65	521 / 1,972	29	2,000 / 907
P81463+	21,397 / 80,996	81	667 / 2,525	37	2,178 / 988
P103463+	27,210 / 103,001	103	792 / 2,998	47	2,480 / 1,125

NOTE: Ratings based on 77°F/25°C; 32,500 TDS; <3 SDI; 7.5 pH; Free Chlorine max 0.1 mg/L.

**DIMENSIONS**



**HIGHER OUTPUT AND CUSTOM SYSTEMS:**  
 FCI Watermakers' commercial line of desalinators can handle outputs up to and exceeding 1,000 m3. Please contact us to find the product or custom option for you.